

ESTANCIA II OF VIA VERDE

P.U.D.

IN PART OF SECTIONS 15 & 16, TWP. 47 S., RGE. 42 E.

PALM BEACH COUNTY, FLORIDA
IN 2 SHEETS SHEET NO. 2

GEE & JENSON
ENGINEERS-ARCHITECTS-PLANNERS, INC.
WEST PALM BEACH, FLORIDA
OCTOBER 1976

113

SEE
BACK

STATE OF FLORIDA
COUNTY OF PALM BEACH
This Plat was filed for record at _____ M.
this _____ day of _____, 197____,
and duly recorded in Plat Book No. _____
on page _____
JOHN B. DUNKLE, Clerk Circuit Court
By: _____, D.C.

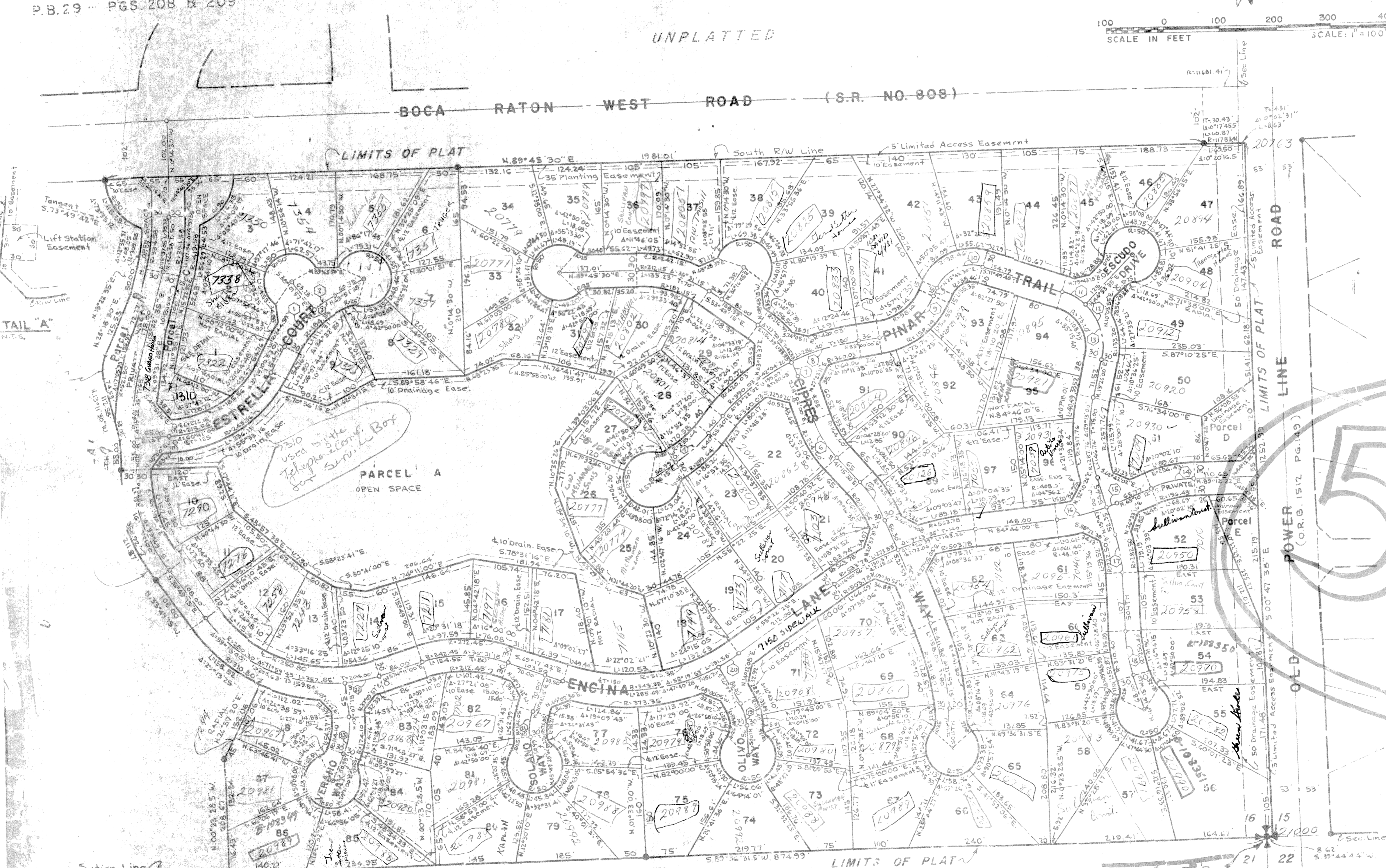
100 0 100 200 300 400
SCALE IN FEET SCALE: 1"=100'



UNPLATTED

BOCA RATON WEST ROAD (S.R. NO. 808)

LIMITS OF PLAT



53+38

NOTES

- All bearings shown hereon are relative to an assumed meridian used throughout Boca West.
- Building Setback Lines shall be as required Palm Beach County Zoning Regulations.
- There shall be no buildings or other structures placed on Utility Easements.
- There shall be no buildings or any kind of construction or trees or shrubs placed on Drainage Easements.
- Easements are for Public Utilities, unless otherwise noted.
- denotes Permanent Reference Monument
- denotes Permanent Control Point
- Where Utility Easements and Drainage Easements cross, Drainage Easements shall take precedent.
- Utility Easements over all Tracts shown hereon for Food Purposes

(1) R=1.09 A=23°39'03" L=64.84' T=42.98'	(2) R=214.59 A=1°58'55" L=44.54' T=22.36'	(3) R=214.59 A=34°32'58" L=123.40' T=36.73'	(4) R=269.64 A=1°52'35" L=79.42' T=40.00'	(5) R=235.54 A=19°16'35" L=79.24' T=40.00'	(6) R=194.60 A=23°13'50" L=78.90' T=40.00'	(7) R=186.39 A=08°21'00" L=27.16' T=13.61'	(8) R=214.59 A=1°58'55" L=44.54' T=22.36'	(9) R=214.59 A=34°32'58" L=123.40' T=36.73'	(10) R=269.64 A=1°52'35" L=79.42' T=40.00'	(11) R=235.54 A=19°16'35" L=79.24' T=40.00'	(12) R=194.60 A=23°13'50" L=78.90' T=40.00'	(13) R=186.39 A=08°21'00" L=27.16' T=13.61'	(14) R=214.59 A=1°58'55" L=44.54' T=22.36'	(15) R=214.59 A=34°32'58" L=123.40' T=36.73'	(16) R=269.64 A=1°52'35" L=79.42' T=40.00'	(17) R=235.54 A=19°16'35" L=79.24' T=40.00'	(18) R=194.60 A=23°13'50" L=78.90' T=40.00'	(19) R=186.39 A=08°21'00" L=27.16' T=13.61'	(20) R=214.59 A=1°58'55" L=44.54' T=22.36'	(21) R=214.59 A=34°32'58" L=123.40' T=36.73'	(22) R=269.64 A=1°52'35" L=79.42' T=40.00'	(23) R=235.54 A=19°16'35" L=79.24' T=40.00'	(24) R=194.60 A=23°13'50" L=78.90' T=40.00'	(25) R=186.39 A=08°21'00" L=27.16' T=13.61'
---	--	--	--	---	---	---	--	--	---	--	--	--	---	---	---	--	--	--	---	---	---	--	--	--

L.W.D.D. LATERAL No. 46
ESTANCIA II
UNPLATTED
VIA VERDE

15+16 / 0323-317 32 / 113
P.U.D. 147/42